

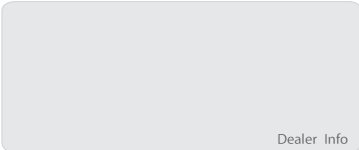


MATERIAL HANDLING MACHINE



SANY Industrial Park, Gaolan Port Economic and Development Zone,
Zhuhai, Guangdong, China

Tel +86-756-7266963 Service +86-4008-87-8318



Dealer Info



© Printed in China Code: 2011-SMH

SANY Material Handling Machine

The material handling machine has been widely used in steel plants, ports, stacking yards and warehouses to load or stack steel scrap and bulk cargoes as well as to pick up, hoist or cut materials. SANY Material Handling Machine has been applied multiple in-house developed technologies in the areas of energy saving and control, hydraulic linkage, anti-rollover protection, malfunction automatic detection and data real-time display to back up the world leading performance.

Faster Operation

Equipped with Kawasaki large displacement main pump, high efficiency main valve and reducer, can realize fast operation.

Wider Application

Excellent load capacity and optional boom length, adapt to a wider range of operating conditions.

Stronger Power

high torque engine and motor, adopted mature chassis, reliable structure.

More Savings

Controller has positive flow hydraulic system. Engine match with main pump perfectly and energy consumption reduced by 10%.



SMHW30



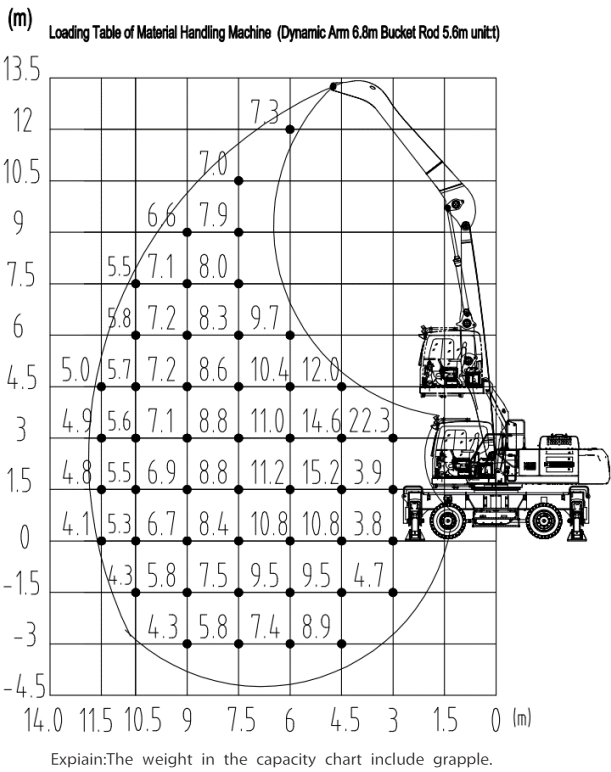
Brief Introduction

Sany 30t Material Handling machine mainly apply to various bulk cargoes grab operation. The whole machine is light and flexible, stable, efficient.

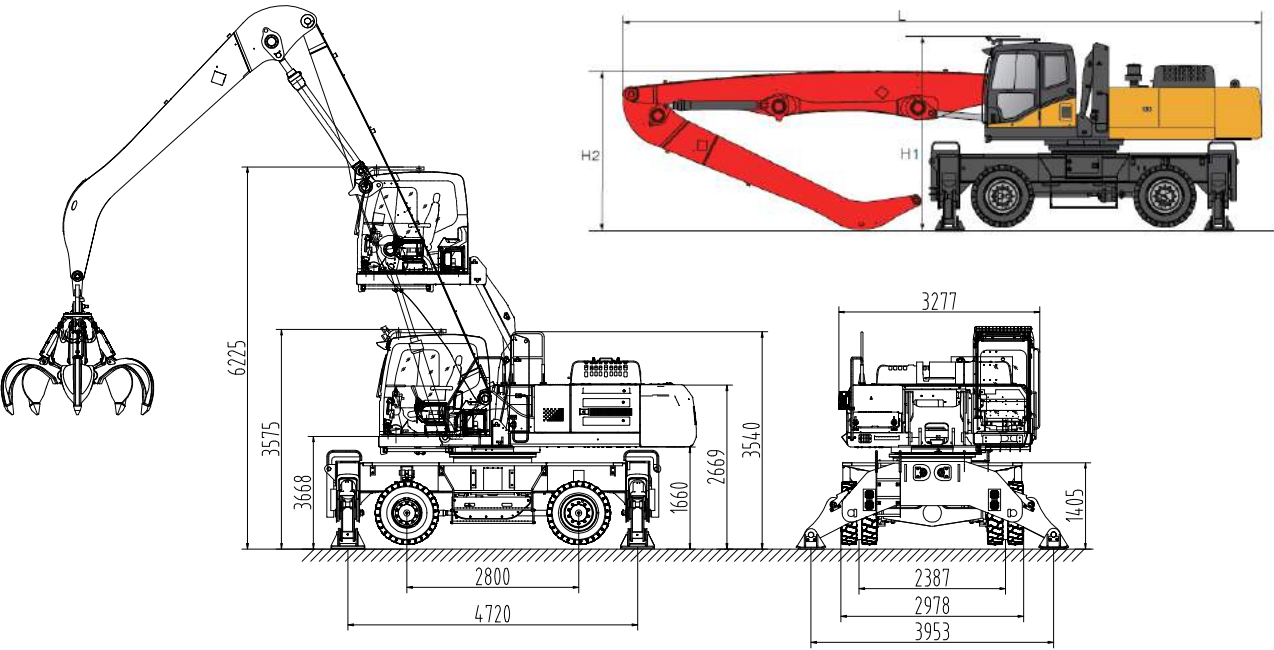
CONFIGURATION PARAMETER

Power system	Engine	Model	Mitsubishi D06FRC-TAA
		Power	147kW/2100rpm
		Torque	750Nm//1350rpm
		Emission	CHN III
		Oil tank	465L
Chassis	Tread width		2387mm
	Wheelbase		2800mm
	Vertical span		4720mm
	Horizontal span		3953mm
	Turning radius		8600mm
	Maximum travel speed		20km/h
Hydraulic system	Control type		Electronic control positive flow system
	Main pump	Model	Rexroth A28VO130E71CPB/10DRVG3R12F1B2S40-0
		Rated flow	2X260L/min
	Main valve		Kawasaki KMX15RB/B45606-EV1
	Reducer		Sauter GS14D20C.0
	Movable boom cylinder		Hengli JSY26.5-DB
	Stick cylinder		Zhongxing ZX200.3.1B
	Maximum system pressure		32MPa
Slewing mechanism	Hydraulic circuit		230L
	Slewing bearing		Sauter SSF1405/40CWH II
	Maximum slewing speed		8rpm
Operation Cabin	Lifting height		2650mm
Operation basic parameter	Boom specification	12m	
		Maximum working radius	
		Maximum working height	
	Maximum working radius		11.5m
	Maximum working height		12m
	Maximum working depth		-3 m
Theoretical load on maximum radius point(including grab)		5t	

Working range



The diagram of dimension



	The length of movable hinge point	The length of stick point	L	H1	H2
Boom combination(standard)	6.8m	5.6m	5.85m	3.61m	3m

SMHC35



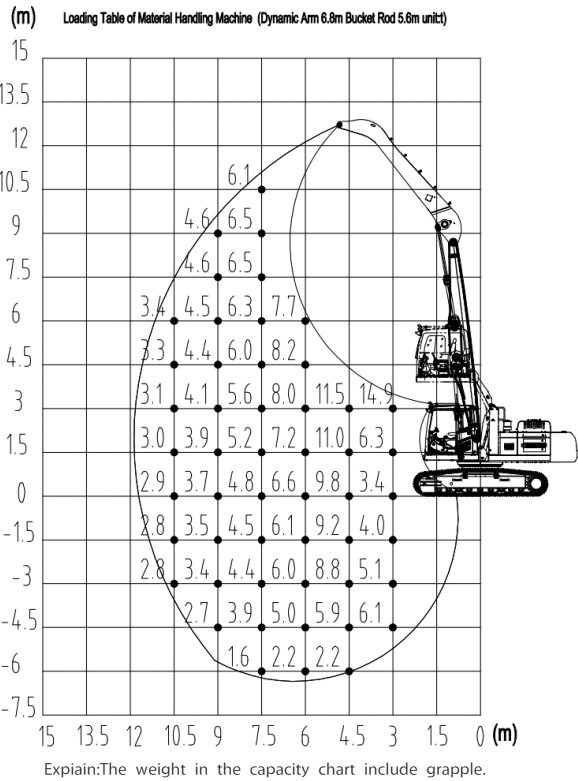
Brief Introduction

Sany 35t Material Handling machine mainly apply to grab and loading or unloading operation for waste steel and bulk, with high efficiency, super high performance, safety and reliability.

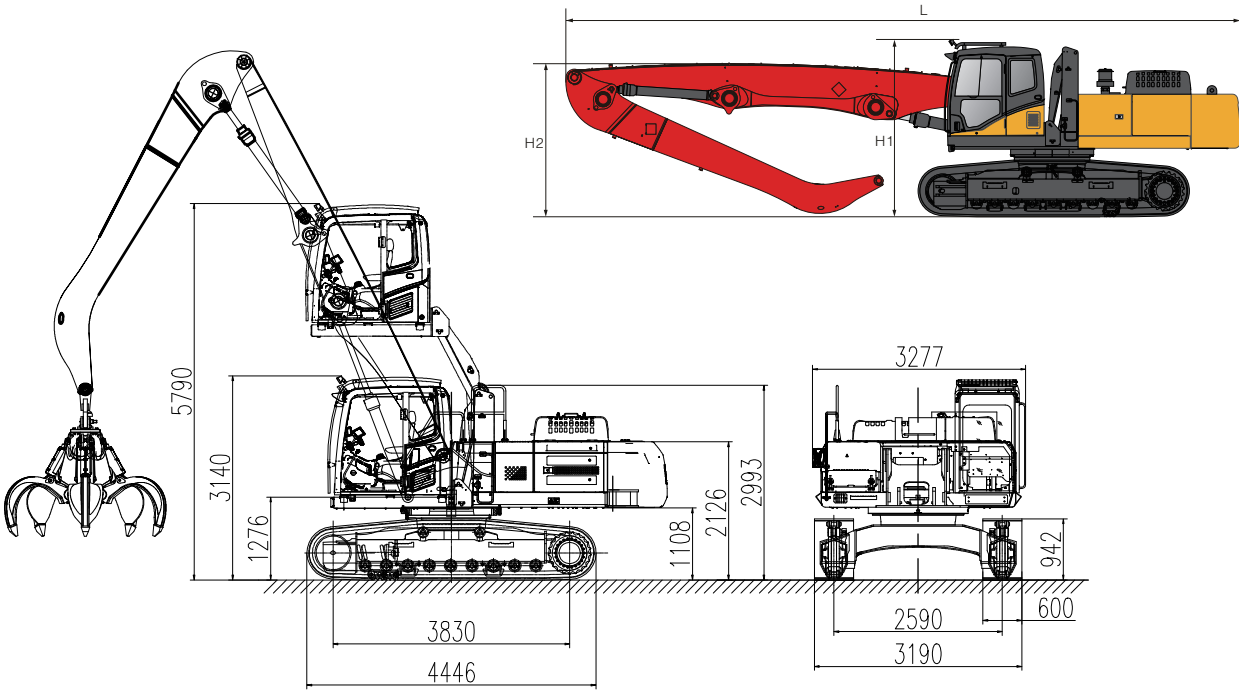
CONFIGURATION PARAMETER

Power system	Engine		Mitsubishi D06FRC-TAA
		Maximum power	147kW/2100rpm
		Maximum torque	750Nm//1350rpm
		Emission	CHN III
		Oil tank	465L
Moving system	Working rail span		2590mm
	Tread width		3830mm
	Track width		600mm
	Maximum travel speed		5km/h
	Control type		Electronic control positive flow system
Hydraulic system	Main pump	Model	Kawasaki K7V125DTP1N9R-0E05-1V
		Rated flow	2X260L/min
	Main valve		Kawasaki KMX15RB/B45217A-V
	Reducer		Sauter GS14D20C.0
	Movable boom cylinder		Hengli JSY26.5-DB
	Stick cylinder		Zhongxing ZX200.3.1B
	Maximum system pressure		32MPa
	Hydraulic oil tank		230L
Slewing mechanism	Slewing bearing		Sauter SSF1405/40CWH II
	Maximum slewing speed		8rpm
Operation cabin	Lifting height		2650mm
Operation basic parameters	Boom specification	12m	
		Maximum working radius	
		Maximum working height	
	Maximum working radius		10.5m
	Maximum working height		10.5m
	Maximum working depth		-6m
	Theoretical load on maximum radius point(including grab)		3.4t

Working range



The diagram of dimension



	The length of movable hinge point	The length of stick point	L	H1	H2
Boom combination(standard)	6.8m	5.6m	10.4m	3.14m	2.58m

SMHC45



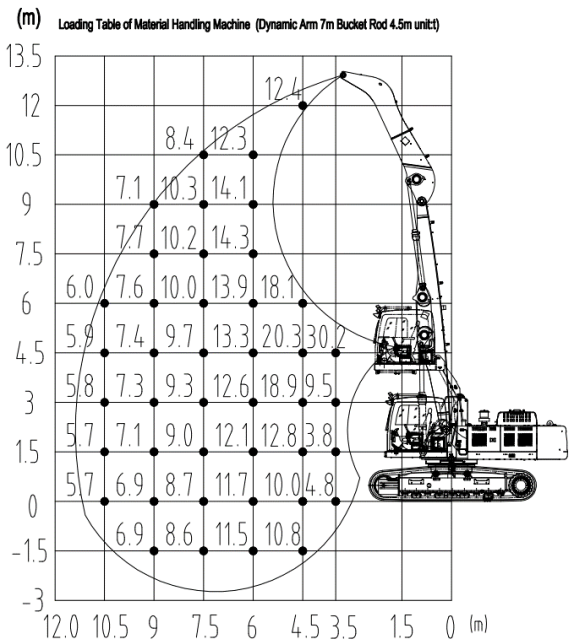
Brief Introduction

Sany 45t Material Handling machine mainly apply to grab and loading or unloading operation for waste steel and bulk, with high efficiency, super high performance, safety and reliability.

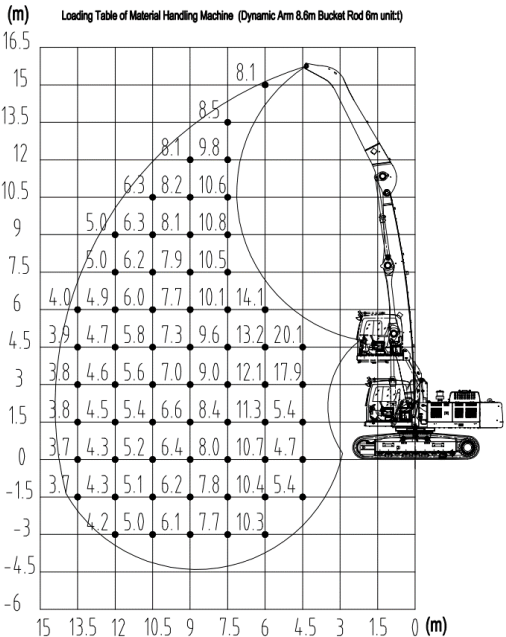
CONFIGURATION PARAMETER

Power system	Engine					
		Maximum power	212kW/2000rpm			
		Maximum torque	1080Nm//1500rpm			
		Emission	CHN III			
		Oil tank	540L			
Moving system	Working rail span		2590mm			
	Tread width		4140mm			
	Track width		600mm			
	Maximum travel speed		5km/h			
Hydraulic system	Control type		Electronic control positive flow system			
	Main pump	Model	Kawasaki K5V160DTH1SXR-9T46-BV			
		Rated flow	2X320L/min			
	Main valve		Kawasaki KMX15RB/B45606-EV1			
	Reducer		Kawasaki M5X180CHB-10A-6RA/265-RG20D25			
	Movable boom cylinder		Zhongxing ZXSMHW40.1.3			
	Stick cylinder		Zhongxing ZXWMHW40.1.4			
	Maximum system pressure		32MPa			
	Hydraulic oil tank		340L			
Slewing mechanism	Slewing bearing		Sauter SSF1405.50CWHII			
	Maximum slewing speed		8rpm			
Operation cabin	Lifting height		2650mm			
Operation basic parameters	Boom specification		11m		14m	
			Movable boom: 7m		Movable boom: 8.6m	
			Stick: 4.5 m		Stick: 6m	
	Assembly hinge point of boom in the slewing platform		Upper hinge point	Nether hinge point	Upper hinge point	Nether hinge point
	Maximum working radius		10.5m	10.5m	13.5m	13.5m
	Maximum working height		10.5m	12m	13.5m	15m
	Maximum working depth		-3m	-1.5m	-6m	-3m
	Theoretical load on maximum radius point(including grab)		6t	6t	3.9t	4t

Working range

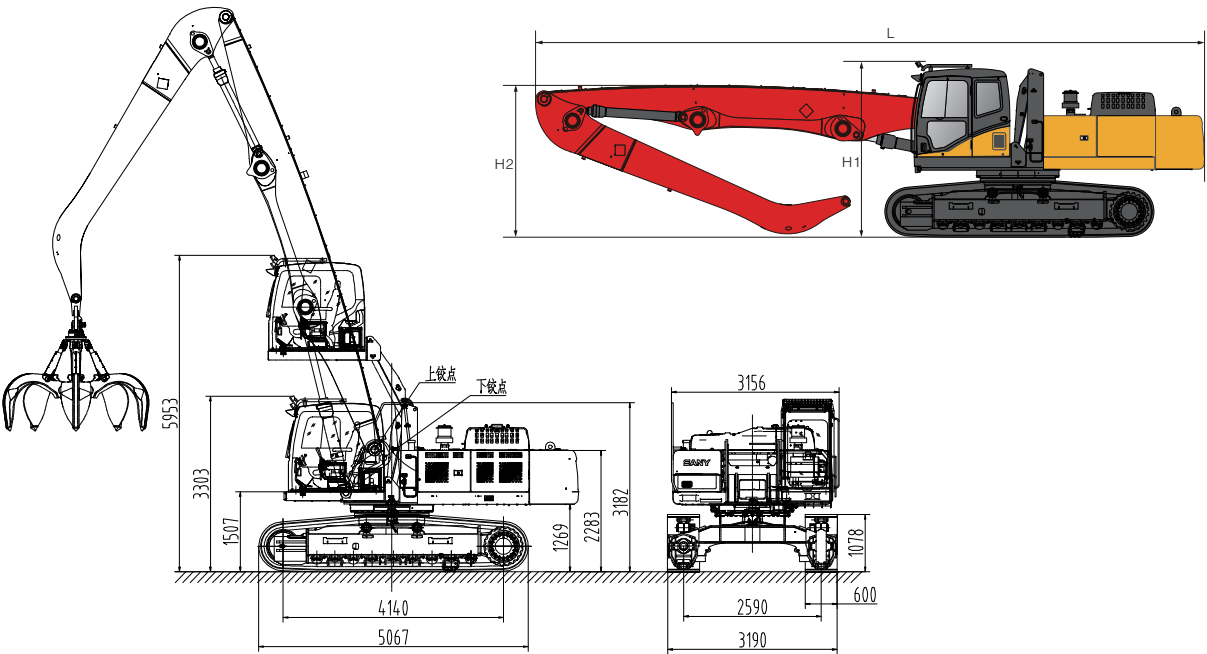


Explain:The weight in the capacity chart is the load when arm is installed at the lower hinge point.
The weight in the capacity chart include grapple.



Explain:The weight in the capacity chart is the load when arm is installed at the lower hinge point.
The weight in the capacity chart include grapple.

The diagram of dimension



	The length of movable hinge point	The length of stick point	L	H1	H2
Boom combination 1	7m	4.5m	11m	3.31m	2.76m
Boom combination 2	8.6m	6m	12.58m	3.31m	2.76m

SMHW48



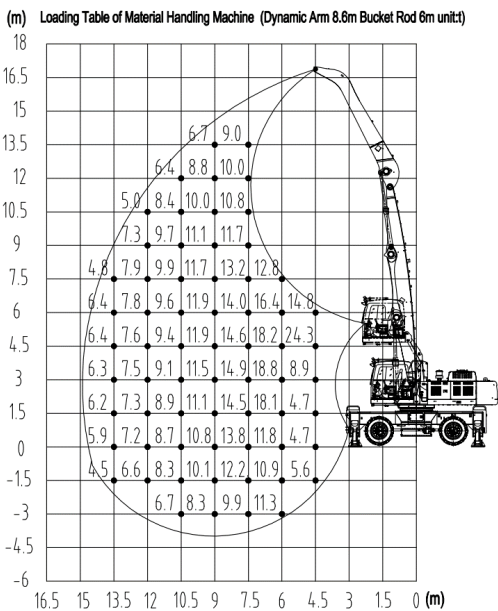
Brief Introduction

Sany 48t Material Handling machine widely apply to loading and unloading bulk material at railway or river terminals, with various boom combination option to meet different working conditions, wider working range, high efficiency.

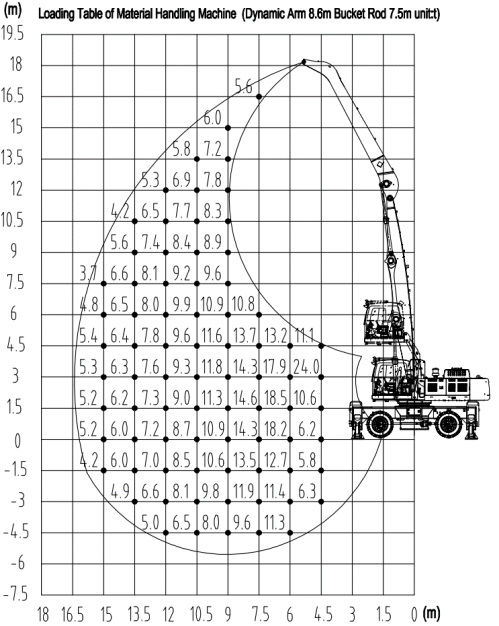
CONFIGURATION PARAMETER

Power system	Engine	Model	Isuzu GH-6HK1XKSC-01									
		Power	212kW/2000rpm									
		Torque	1080Nm/1500rpm									
		Emission	CHN III									
		Oil tank	540L									
Power system	Tread width		2445 mm									
	Wheelbase		3200mm									
	Vertical span		5300mm									
	Horizontal span		4600mm									
	Turning radius		6000mm									
	Maximum travel speed		20km/h									
Hydraulic system	Control type		Electronic control positive flow system									
	Main pump	Model	Kawasaki K5V160DTP1X7R-OE40-BV									
		Rated flow	2X320L/min									
	Main valve		Kawasaki KMX15RB/B45606-EV1									
	Reducer		Kawasaki M5X180CHB-10A-6RA/265-RG20D25									
	Movable boom cylinder		Zhongxing ZXSMHW40.1.3									
	Stick cylinder		Zhongxing ZXWMHW40.1.4									
	Maximum system pressure		32MPa									
Slewing mechanism	Slewing bearing		Kawasaki SSF1405.50CWHII									
	Maximum slewing speed		8rpm									
Operation cabin	Lifting height		2650mm									
Operation basic parameters	Boom specification		14m		16m		17m		18m		20m	
			Movable boom: 8.6m		Movable boom: 8.6m		Movable boom: 9.6m		Movable boom: 10.5 m		Movable boom: 10.5 m	
			Stick: 6m		Stick: 7.5m		Stick: 7.5m		Stick: 7.5m		Stick: 9.5m	
	Assembly hinge point of boom in the slewing platform		Upper hinge point	Nether hinge point	Upper hinge point	Nether hinge point	Upper hinge point	Nether hinge point	Upper hinge point	Nether hinge point	Upper hinge point	Nether hinge point
	Maximum working radius		13.5m	13.5m	15m	15m	16.5 m	16.5m	16.5m	16.5m	19.5 m	18m
	Maximum working height		12m	13.5m	12m	16.5m	13.5m	16.5m	15m	16.5m	16.5 m	18m
	Maximum working depth		-4.5m	-3 m	-6m	-4.5 m	-6m	-4.5 m	-6m	-4.5 m	-9m	-6m
	Theoretical load on maximum radius point(including grab)		6.4t	6.4t	5.3t	5.4t	4.4t	4.4t	4.4t	4.5t	3.1t	3.8t

Working range

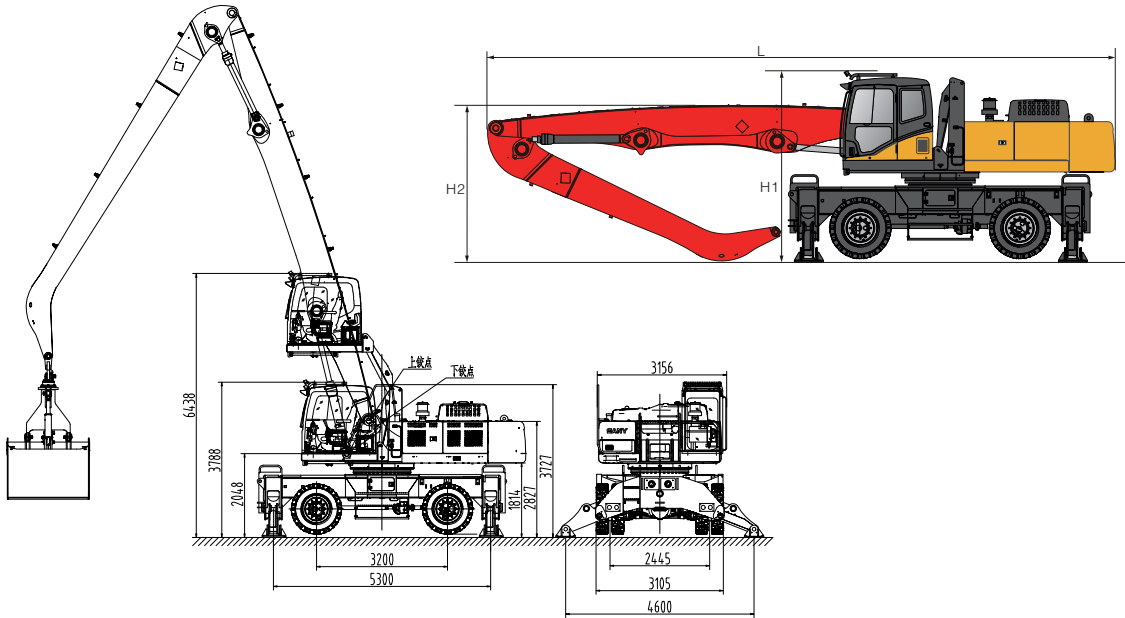


Explain:The weight in the capacity chart is the load when arm is installed at the lower hinge point.
The weight in the capacity chart include grapple.



Explain:The weight in the capacity chart is the load when arm is installed at the lower hinge point.
The weight in the capacity chart include grapple.

The diagram of dimension



	The length of movable hinge point	The length of stick point	L	H1	H2
Boom combination 1	8.6m	6m	12.24m	3.708m	3m
Boom combination 2	9.6m	7.5m	13.32m	3.708m	5.2m
Boom combination 1	10.5 m	9.5m	14.23m	3.708m	6.1m

SMHC50-D



Brief Introduction

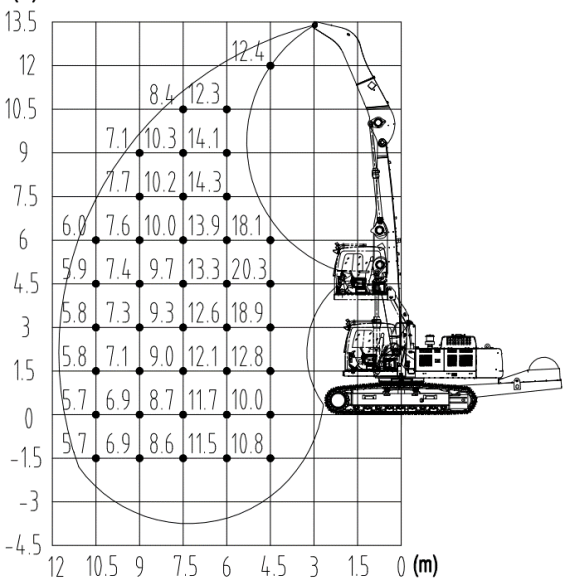
Sany 50D Materials Handler is pure electric machine. Equipped with different grabs to apply to the loading and unloading of bulk materials and waste steel. Driving by motor, zero exhaust, more environmental and saving 50% cost comparing internal combustion engine machine.

CONFIGURATION PARAMETER

Power system	Motor	Rated power	160kW/1480rpm			
		Voltage	380V, 50Hz			
		Start type	Soft Start			
Moving system	Working rail span		2590mm			
	Tread width		4140mm			
	Track width		600mm			
	Maximum travel speed		5km/h			
Hydraulic system	Control type		Electronic control positive flow system			
	Main pump	Model	Kawasaki K5V200DTH1X5R-OE30-BV			
		Rated flow	2X390L/min			
	Main valve		Kawasaki KMX15RB/B45606-EV1			
	Reducer		Kawasaki M5X180CHB-10A-6RA/265-RG20D25			
	Movable boom cylinder		Zhongxing ZXSMHW40.1.3			
	Stick cylinder		Zhongxing ZXWMHW40.1.4			
Slewing mechanism	Maximum system pressure		32MPa			
	Hydraulic oil tank		340L			
	Slewing bearing		Sauter SSF1405.50CWHII			
Operation cabin	Maximum slewing speed		8rpm			
	Lifting height		2650mm			
Operation basic parameters	Boom specification		Movable boom: 7m		Movable boom:8.6m	
			Stick: 4.5 m		Stick: 6m	
	Assembly hinge point of boom in the slewing platform		Upper hinge point	Nether hinge point	Upper hinge point	Nether hinge point
	Maximum working radius		10.5m	10.5m	13.5m	13.5m
	Maximum working height		10.5m	12m	13.5m	15m
	Maximum working depth		-3m	-1.5m	-6m	-3m
	Theoretical load on maximum radius point(including grab)		6t	6t	3.9t	4t

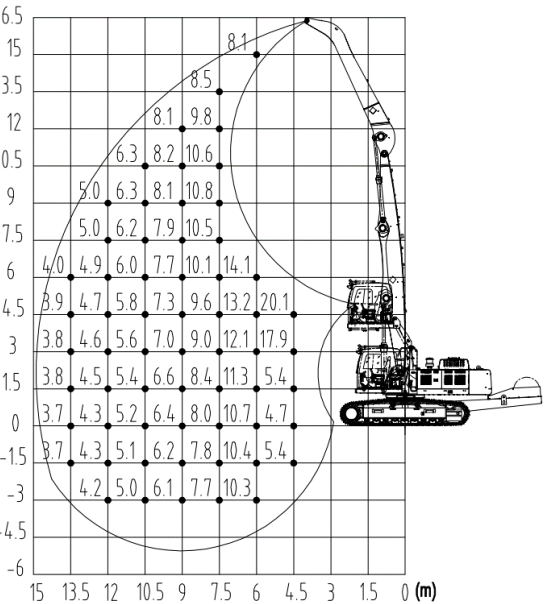
Working range

(m) Loading Table of Material Handling Machine (Dynamic Arm 7m Bucket Rod 4.5m unit)



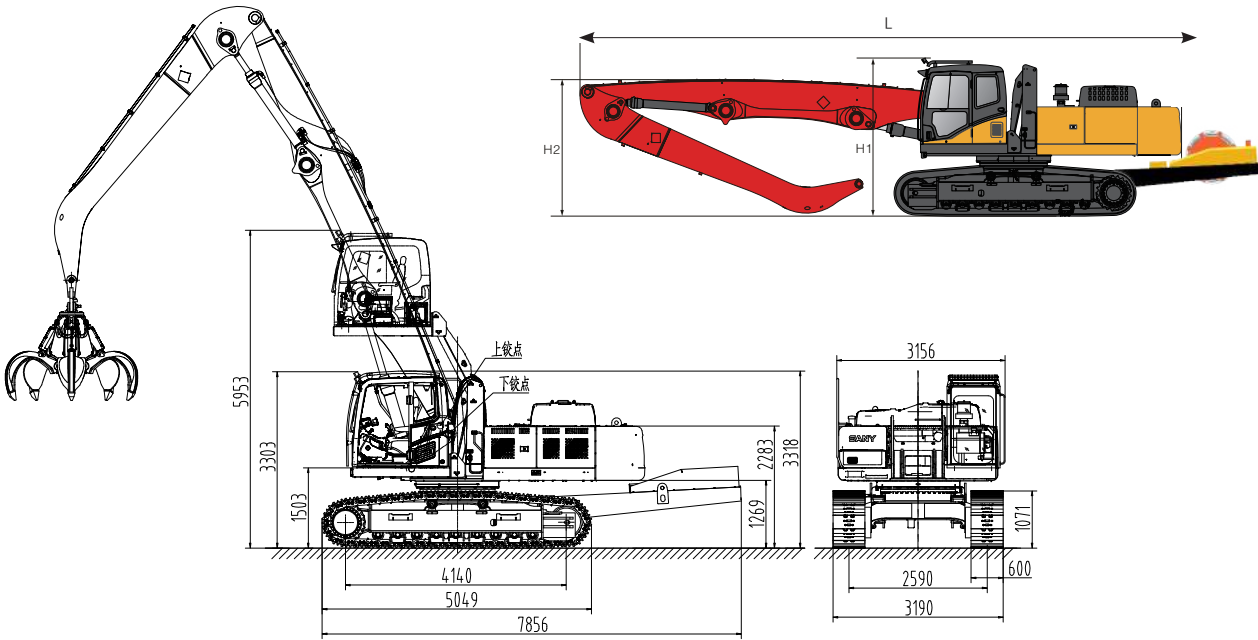
Explain:The weight in the capacity chart is the load when arm is installed at the lower hinge point.
The weight in the capacity chart include grapple.

(m) Loading Table of Material Handling Machine (Dynamic Arm 8.6m Bucket Rod 6m unit)



Explain:The weight in the capacity chart is the load when arm is installed at the lower hinge point.
The weight in the capacity chart include grapple.

The diagram of dimension



	The length of movable hinge point	The length of stick point	L	H1	H2
Boom combination 1	7m	4.5 m	12.8m	3.31m	2.76m
Boom combination 2	8.6m	6m	14.38m	3.31m	2.76m

SMHC70



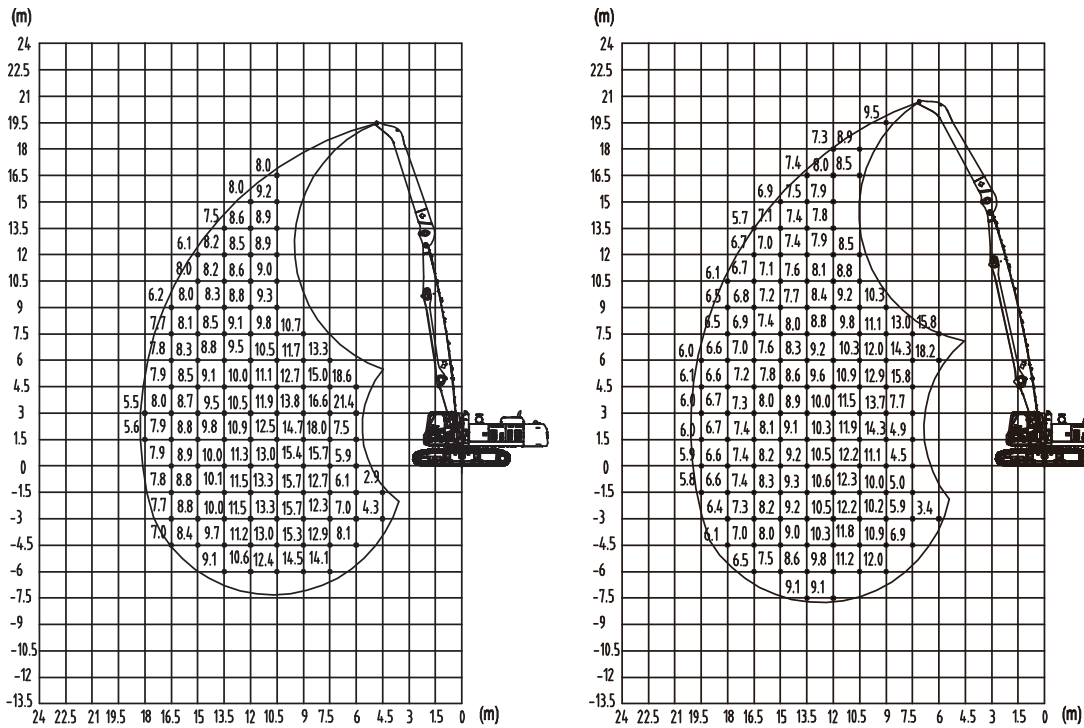
Brief Introduction

Sany 70t Material Handling machine equips with dual powers, mainly apply to bulk materials loading and unloading in river terminals. It has big double shell grab and various boom combination, working wider range, high efficiency, unloading completely.

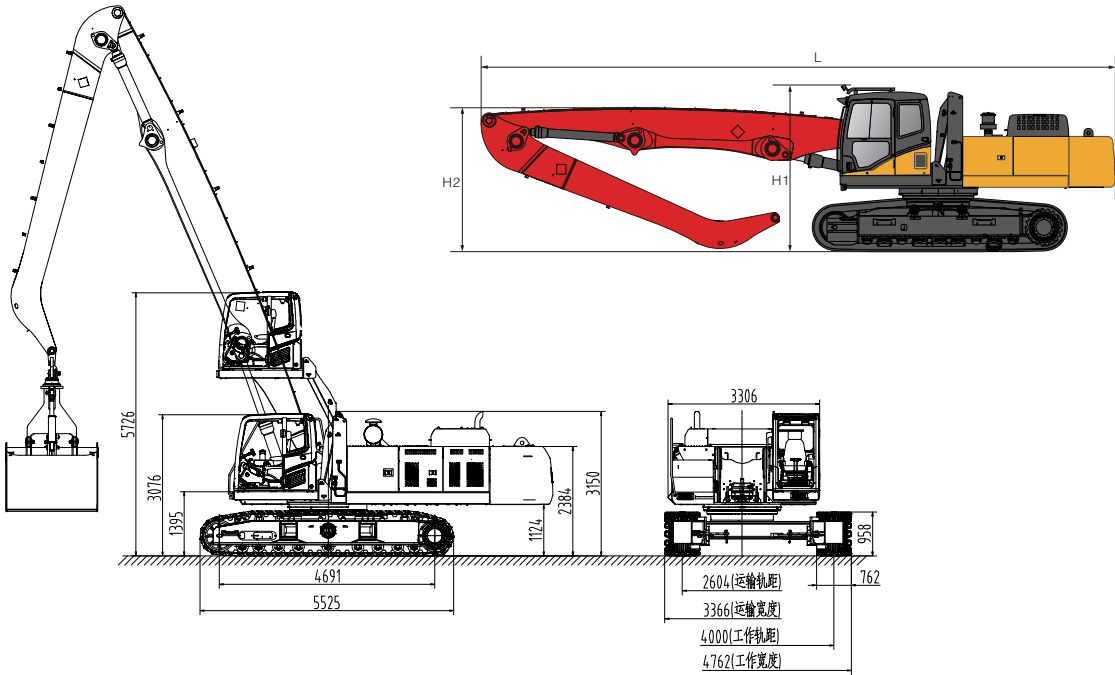
CONFIGURATION PARAMETER

Power system	Engine			
		Maximum power	264kW/2100rpm	
		Maximum torque	1500Nm/1500rpm	
		Emission	CHN III	
		Oil tank	600L	
	Motor	Model	Chang Diantou Y250-380-407	
		Rated power	250kW/1490rpm	
		Voltage	380V, 50Hz	
Start type		Soft starting		
Moving system	Working rail span		4000mm	
	Tread width		4691mm	
	Track width		762mm	
	Maximum travel speed		3km/h	
Hydraulic system	Control type		Electronic control positive flow system	
	Main pump	Model	Engine connect pump: Kawasaki K5V200DTH1X5R-OE30-BV Motor connect pump: Kawasaki K3V280DTH1GZR-OE82-BVB	
		Rated flow	Working with engine : 2X390L/min Working with motor: 2X417L/min	
	Main valve		Park M02560PH-A	
	Reducer		Kawasaki M5X250CHB-10A-15A/275-RG27D25E	
	Movable boom cylinder		Zhongxing ZXSMHC70.8.3.1	
	Stick cylinder		Zhongxing ZXSMHW40.1.3	
	Maximum system pressure		34.3MPa	
	Hydraulic oil tank		500L	
Slewing mechanism	Slewing bearing		Sauter SSf1530/60CWHV	
	Maximum slewing speed		8rpm	
Operation cabin	Lifting height		2650mm	
Operation basic parameters	Boom specification		18m	20m
			Movable boom: 10.5 m	Movable boom: 12.5 m
			Stick: 7.5 m	Stick: 7.5m
	Maximum working radius		16.5m	19.5m
	Maximum working height		15m	19m
	Maximum working depth		-7.5m	-7.5m
	Theoretical load on maximum radius point(including grab)		8.0t	6.1t

Working range



The diagram of dimension



	The length of movable hinge point	The length of stick point	L	H1	H2
Boom combination 1	10.5m	7.5m	15300mm	3140mm	6800mm
Boom combination 2	12.5m	7.5m	17560mm	3140mm	6230mm

TECHNICAL PARAMETER

Technical parameter		SMHW30	SMHC35	SMHC45	SMHW48	SMHC50-D	SMHC70
Engine	Model	Mitsubishi	Mitsubishi	Isuzu GH-6HK1XKSC-01	Isuzu GH-6HK1XKSC-02	Chang Diantou	Dongfeng Cummins
	Power	147kW/2100rpm	147kW/2100rpm	212kW/2000rpm	212kW/2000rpm	160kW/1480rpm	264kW/2100rpm
	Torque	750Nm//1350rpm	750Nm//1350rpm	1080Nm//1500rpm	1080Nm//1500rpm		1500Nm/1500rpm
	EMission	CHN III	CHN III	CHN III	CHN III	CHN III	CHN III
	Oil tank	465L	465L	540L	540L		600L
Chassis	Tread width	2387mm	3830mm	4140mm	2445mm	4140mm	4691mm
	Wheelbase	2800mm			3200mm		
	Vertical span	4720mm			5300mm		
	Horizontal span	3953mm			4600mm		
	Turning radius	8600mm			6000mm		
	Maximum travel speed	20km/h	5km/h	5km/h	20km/h	5km/h	3km/h
Hydraulic system	Control type	Electronic control positive How system	Electronic control positive How system	Electronic control positive How system	Electronic control positive How system	Electronic control positive How system	Electronic control positive How system
	Main pump model	Rexroth	Kawasaki	Kawasaki	Kawasaki	Kawasaki	Kawasaki
	Main pump Rated flow	2×260L/min	2×260L/min	2×320L/min	2×320L/min	2×390L/min	When use Engine 2 • 390L/min When use electromotor 2 • 417L/min
	Main valve	Kawasaki	Kawasaki	Kawasaki	Kawasaki	Kawasaki	Park M02560PH-A
	Reducer	Sauter	Sauter	Kawasaki	Kawasaki	Kawasaki	Kawasaki
	Movable boom cyhnder	Hengli	Hengli	Zhongxing	Zhongxing	Zhongxing	Zhongxing
	Stick cylinder	Zhongxing	Zhongxing	Zhongxing	Zhongxing	Zhongxing	Zhongxing
	Maximum system pressure	32MPa	32MPa	32MPa	32MPa	32MPa	34.3MPa
	Hydraulic oil tank	230L	230L	340L	340L	340L	500L
Slewing mechanism	Slewing bearing	Sauter	Sauter		Sauter	Sauter	Sauter
	Maximum slewing speed	8rpm	8rpm	8rpm	8rpm	8rpm	8rpm
Operation cabin	Lifting height	2650mm	2650mm	2650mm	2650mm	2650mm	2650mm

OPTIONAL ATTACHMENTS



Plum blossom grab



Double shell grab



Wood log grab

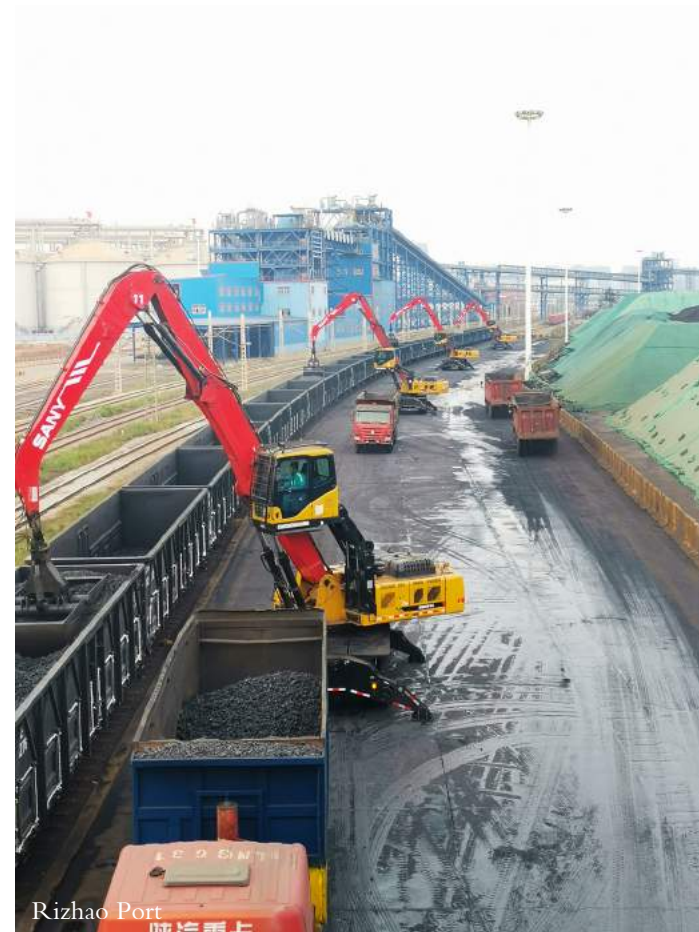
Grab configuration						
Material type		Density (t/m ³)	Grab type	Grab model	Capacity (m ³)	Weight(t)
Waste material	Steel, rubber	1	Plum blossom grab	SLM1000	1	2.12
Super light density material	Fertilizer、fodder	0.6	Double shell grab	SLS5006	5	2.97
Light density material	Coal	0.8	Double shell grab	SLS3508	3.5	2.77
Middle density material	Sand、grit	1.6	Double shell grab	SLS2525	2.5	2.42
Strong density material	Iron ore	2.4	Double shell grab	SLS1525	1.5	2.34
Wood log	3m long	0.8	Wood log grab	SWY2000	2m2	2.06

The data above maybe be changed due to constant update of technology. The specific parameters shall be subject to the contract.

Shots from the
Steel Factories



Shots from the Railway



Shots from the Ports



Shots from the Jobsites



Australia



Guangxi, China



Russia



Liaoning, China



Henan, China



Jiangsu, China



Hebei, China



Changzhou, China



Henan, China



Tianjin, China



Guizhou, China

Shots from the Jobsites



SERVICE

Carefree Service



品质改变世界 服务创造价值
Quality Changes the World Service Creates value



Support Service: **+86-4008-87-8318**

Service vision:

Exceed customer expectation and industry standards.

Service mission:

All for client, create value for customer

Service commitment:

- (1) Reply customer within 15 minutes.
- (2) Reach main service area within 2 hours.
- (3) Solve general problems and provide regular parts within one day.
- (4) Solve customer complaints with two days.
- (5) Solve all issues within 7 days.

Service value:

Innovation、Excellence、Clients、Cooperation、Respect、Passion、Honesty、Responsibility

Service advantage:

“Professional service power” : Sany has offices in over 200 countries and regions, with 11 subsidiaries and 35 service points in domestic together. Setting up the parts warehouse can cover the world range, Forming the four in one of parts supply and guarantee system by headquarters warehouse, regional center warehouse, provincial and prefecture-level city, Accommodating 80000 kinds of parts to ensure fully customer service requirements in time.

“Professional operation and maintenance system” : Sany has invested tens of million of RMB to build “Sany Customer cloud APP” ,which enable customers to monitor the running status and parameters of the equipment in real time anywhere in the world. In addition, it provides online consultation, community communication, accessories mall, one-click repair, maintenance reservation, product knowledge learning and other value-added service. So the customer can easily enjoy the highest quality of service in any place of the world.

