

**SANY**

Quality Changes the World

**SY245H**

# Strive Only for Classic Product

**Brand new change** **QUALITY**  
**CHANGES THE WORLD**  
Quality changes the world

## Selling Points

### ● Ultra-long Life

Through experience accumulation of 15 years, and by virtue of "three-in-one" design & test system for large excavators of SANY, the operating life is more than 15,000H under mining working condition.

### ● Super high adaptability to working conditions

Based on design concept of "one machine for multiple purposes", new appearance and new coating are used to improve the safety and heat dissipation capability. Standard connectors are developed in allusion to mining conditions and make the refitting convenient.

### ● Excellent performance

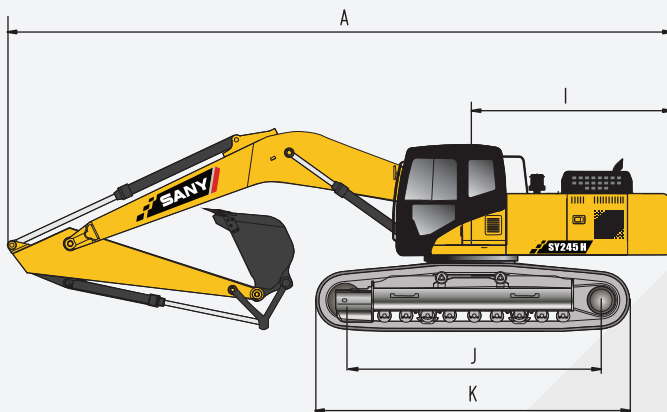
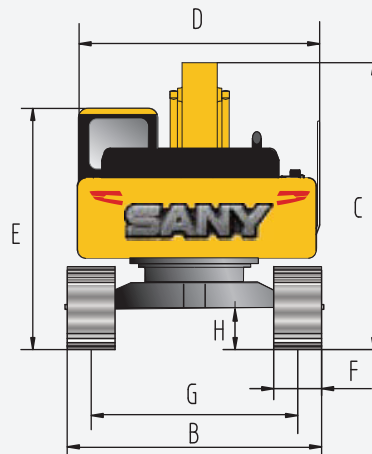
With "positive flow" system and independently developed automatic optimizing control technology (AOCT), the fuel consumption is reduced by 10% of same efficiency. The digging force is powerfully, the control is smooth and it could handle the heavy duty conditions of mining easily.

### ● Super easy management

Four-dimensional construction management system independently developed by SANY is equipped to improve maintenance convenience of maintainable parts, and convenient maintenance design in allusion to severe mining conditions makes equipment management easier and simpler.

## Overall dimensions (mm)

## Standard



### SY245H

A. Overall length (in transportation state)	10290
B. Overall width	3190
C. Overall height (in transportation state)	3255
D. Upper width	3045
E. Overall height (cab top)	3255
F. Width of standard track shoe	600
G. Track gauge	2590
H. Minimum ground clearance	470
I. Slewing radius of tail	3105
J. Ground contact length of track	3640
K. Track shoe length	4445

## Performance parameters

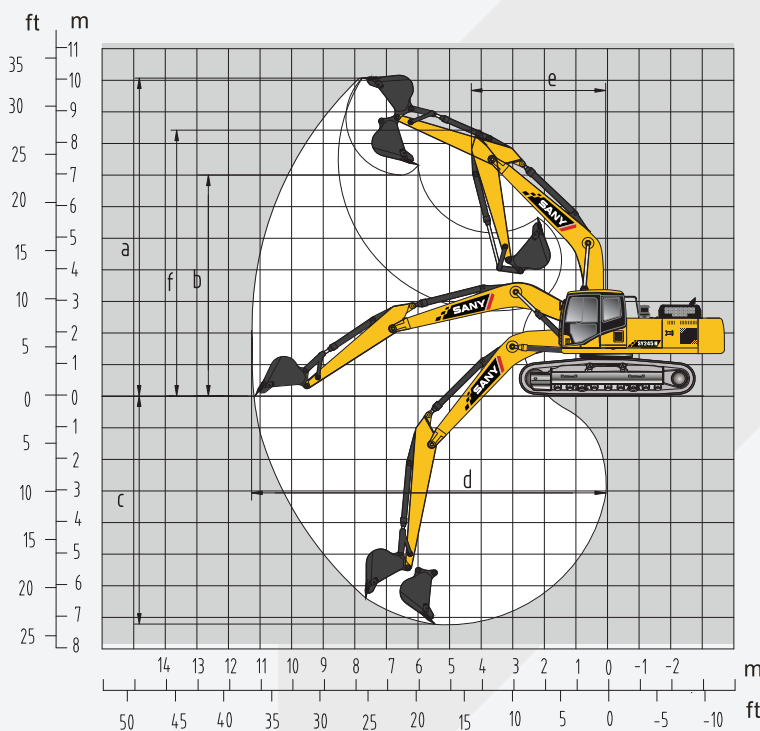
## Standard

### SY245H

Total weight, kg	25500
Bucket capacity, m <sup>3</sup>	1.25~1.4(1.3)
Rated power, kW/rpm	147/2100
Traveling speed (high/low), km/h	5.4/3.4
Slewing speed, rpm	10.6
Gradeability	70%/35°
Ground pressure, kPa	53.2
Digging force of bucket, kN	175
Digging force of bucket rod, kN	120

## Operating range (mm)

## Standard



### SY245H

a. Maximum digging height	9745
b. Maximum unloading height	6715
c. Maximum digging depth	6705
d. Maximum digging distance	10225
e. Minimum slewing radius	3800
f. Maximum height at minimum slewing radius	8016

## SANY Heavy Machinery Co., Ltd.

SANY Industrial Park, Dongcheng Avenue, Kunshan Economic & Technological Development Zone, Jiangsu Province  
Post code: 215300

After-sales service hotline: 4008-28-2318

Consulting & complaint hotline: 4008-87-9318

Website: <http://www.sanygroup.com>



# SANY

Quality Changes the World

## SANY Australia & New Zealand

21 Efficient Drive,  
Truganina, VIC 3029  
T: 1300 888 316

[sales@sany-aus.com](mailto:sales@sany-aus.com)  
[www.sanyaustalia.com.au](http://www.sanyaustalia.com.au)