



SANY

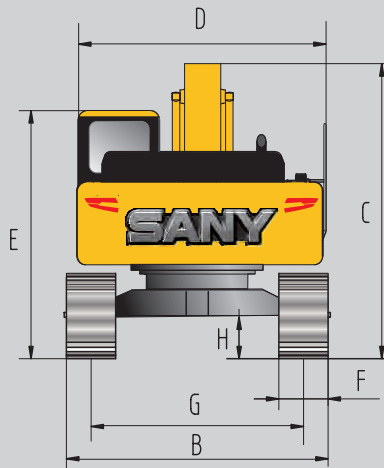
HYDRAULIC EXCAVATOR SY305H

Engine	ISUZU GH-6HK1
Power	212KW/2000 RPM
Operating Weight	31500 KG
Ground Pressure	62 KPA

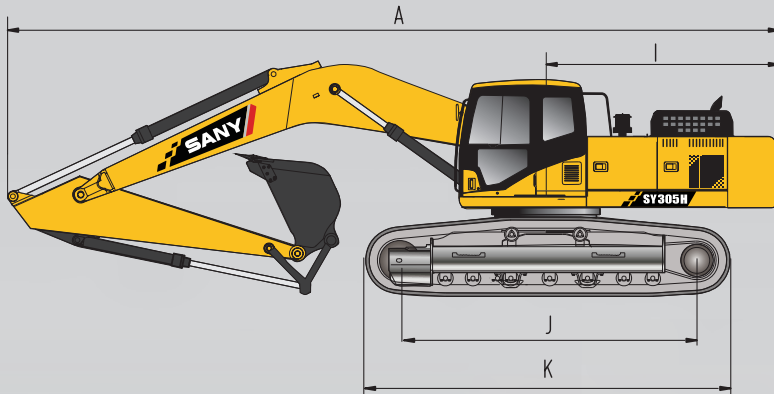


- **THE BALANCE OF POWER, FUEL EFFICIENCY, SPEED MANEUVERABILITY, AND HIGH UPTIME.**
- **THE OPERATING LIFE IS MORE THAN 15000H UNDER MINING WORKING CONDITION.**
- **SUPERIOR MANEUVERABILITY, HIGH PRODUCTIVITY AND RELIABILITY WITH EASY OPERATOR MAINTENANCE.**

OVERALL DIMENSIONS



ITEM	mm
A Transport Length	10667
B Transport Width	3190
C Transport Height	3470
D Upper Structure Width	3175
E Cab Height	3280
F Standard Track Shoe Width	600
G Track Gauge	2590
H Min Ground Clearance	550
I Tail Swing Radius	3315
J Center distance of tumpers	3916
K Track Length	4840



UNDERCARRIAGE	
Track shoe width (mm)	600
Track roller (per side)	8
Carrier roller (per side)	2

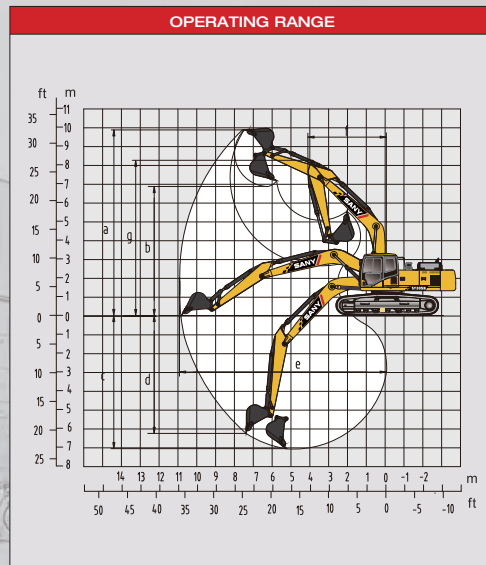
WORKING RANGE

ITEM	mm
A Max. Digging Height	10497
B Max. Dumping Height	7357
C Max. Digging Depth	6815
D Max. Vertical Digging depth	6170
E Max. Digging Reach	10870
F Min. Swing Radius	4000
G Height at Min. Swing Radius	8405

MACHINE PARAMETERS

Operating Weight	31500kg
Engine Type	ISUZU GH-6HK1
Engine Max Power (Gross)	212kW@2000rpm
Engine Max Torque	1080Nm@1500rpm
Engine Displacement	7.79Litre
Swing Speed	9rpm
Travel Speed	5.2/3.4km/h
Bucket Digging Force	204kN
Fuel Tank Capacity	540Litre
Hydraulic Tank Capacity	380Litre
Cooling System Capacity	35Litre
Engine Oil Capacity	2x4Litre
Ground Pressure	62kPa

OPERATING RANGE



Material and specifications are subject to change without notice.
Feature machines in photos may include additional equipment.

 **SANY AUSTRALIA**

Tel: 1800467269
Add: 21 Efficient Drive, TRUGANINA, Victoria, 3029
Web: <https://www.sanyaaustralia.com.au>