



MINI EXCAVATOR RANGE

SY16C

Lean, yet powerful, the SANY SY16C mini excavator offers versatility and reliability in a wide variety of settings. The SY16C is designed to be nimble for jobs in tight job sites or narrow access locations. Environmentally friendly and cost efficient, this excavator will save you time while it saves you money with lower fuel costs and a design that makes it easy to service and maintain.

- » Minimal tail swing radius and independent boom swing allow operation in extremely confined spaces
- » The independently developed intelligent control system matches pump output to available engine power for greater hydraulic system efficiency and lower fuel consumption



SANY

SY16C-TIER 4F (US1820 KG)

 OPERATING WEIGHT:

1820kg

 ENGINE MODEL:

Yanmar 3TNV74F

 WARRANTY:

5 Year / 5,000 Hour

WWW.SANYHM.COM.AU

QUALITY CHANGES THE WORLD

SY16C DIMENSIONS & SPECIFICATIONS

OVERALL DIMENSIONS

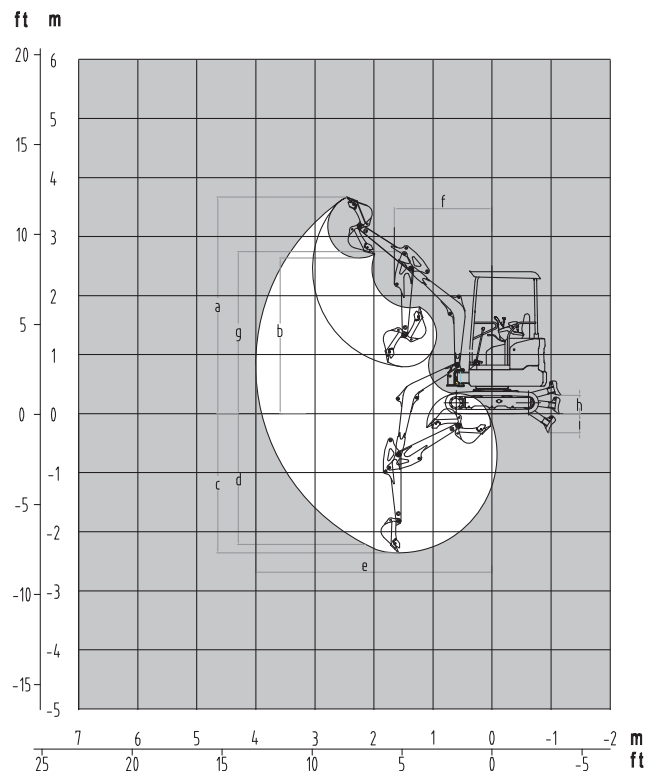
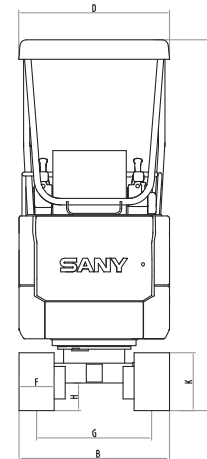
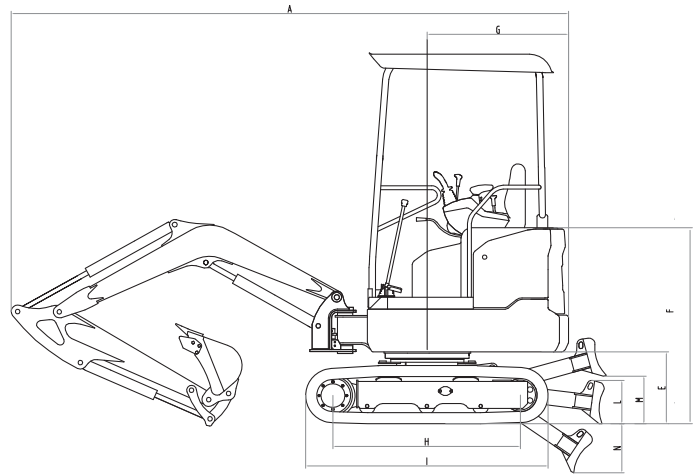
| | | |
|---|---------------------------|---------------|
| A | Transport Length | 3575 mm |
| B | Transport Width | 980 / 1350 mm |
| C | Transport Height | 2420 mm |
| D | Top Width | 980 mm |
| E | Platform Height | 470 mm |
| F | Engine Cover Height | 1280 mm |
| G | Tail Swing Radius | 920 mm |
| H | Track Ground Length | 1225 mm |
| I | Track Length | 1585 mm |
| J | Track Gauge | 750 / 1120 mm |
| K | Standard Track Shoe Width | 230 mm |
| L | Dozer Blade Height | 270 mm |
| M | Dozer Blade Max. Height | 310 mm |
| N | Dozer Blade Max Depth | 320 mm |

WORKING RANGE

| | | |
|---|----------------------------------------|---------|
| a | Maximum Digging Height | 3665 mm |
| b | Maximum Dumping Height | 2635 mm |
| c | Maximum Digging Depth | 2360 mm |
| d | Maximum Vertical Wall Digging Depth | 2215 mm |
| e | Maximum Digging Reach | 4000 mm |
| f | Minimum Swing Radius | 1655 mm |
| g | Maximum Height at Minimum Swing Radius | 2745 mm |

MACHINE PARAMETERS

| | |
|-----------------------------|---------------------------------|
| Operating Weight | 1825 kg |
| Engine Type | Yanmar Tier 4 Final |
| Engine Max Power (Gross) | 15.0 hp (11.2 kW) @ 2400 rpm |
| Engine Max Torque | 51.8 Nm @ 1800 rpm |
| Engine Displacement | 3 0.993 Litre/60.6 in |
| Main Pump Flow | 48 lpm |
| Swing Speed | 10 rpm |
| Travel Speed | 2.1/3.7 km/h |
| Tractive Effort | 15.6 kN |
| Max Arm Digging Force (SAE) | 9.2 kN |
| Number of Upper Rollers | 2 |
| Number of Lower Rollers | 3 |
| Fuel Tank Capacity | 23 Litre |
| Hydraulic Tank Capacity | 21 Litre |
| Cooling System Capacity | 3.8 Litre |
| Engine Oil Capacity | 2.0 Litre |
| Ground Pressure | 4.2 psi/29 kPa |



Not all products are available in all markets. Under our policy of continuous improvement, Sany reserve the right to change specifications and design without prior notice. The illustrations do not necessarily show the standard version of the machine.

SANY HEAVY MACHINERY (AUSTRALIA)

21 EFFICIENT DRIVE, TRUGANINA VIC 3029

PHONE 0400 724 483 WWW.SANYHM.COM.AU

